

CERTIFICATE OF LOCATION OF GOVERNMENT CORNER

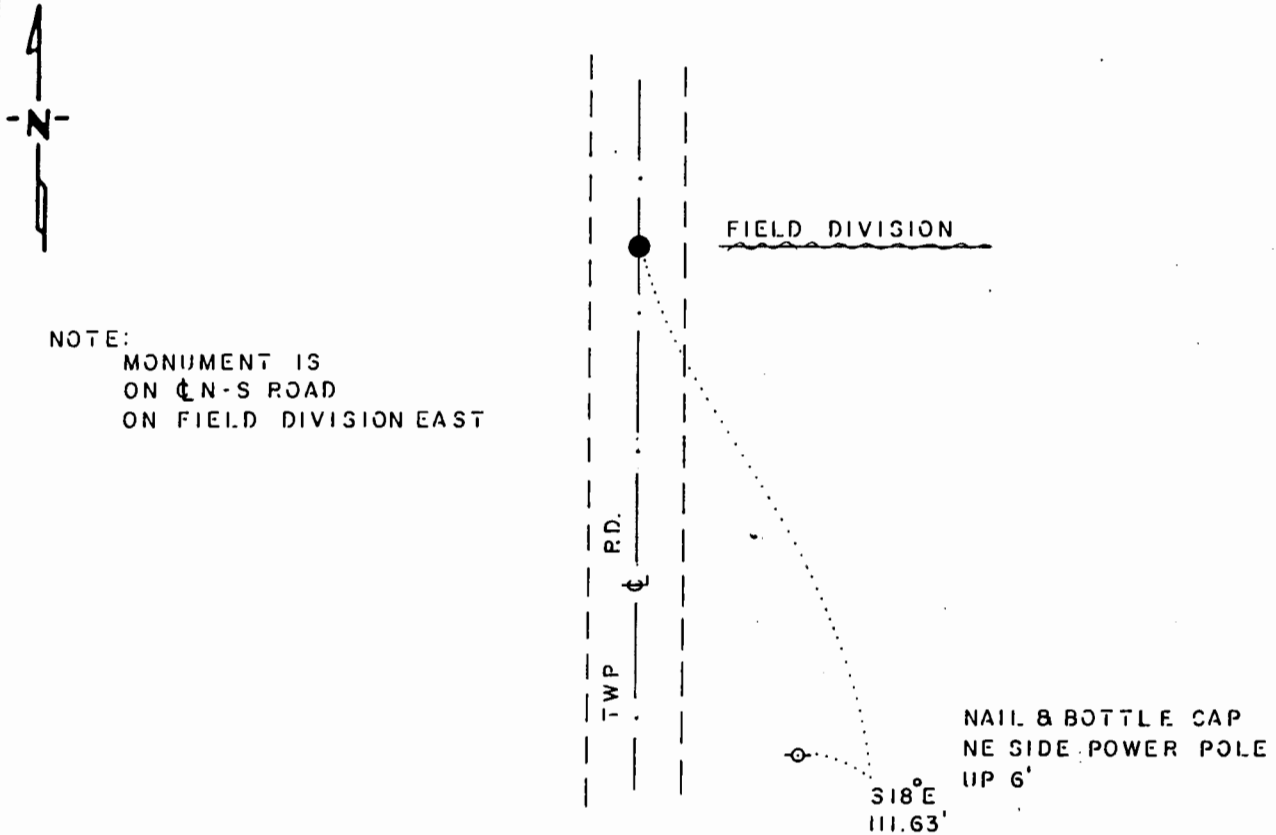
EAST QUARTER Corner of Section 26, Township 107 N., Range 39 W., 5th P.M.

STATE OF MINNESOTA, County of MURRAY

At the corner location shown on the sketch:

- On 3-21-85 found a 5/8" x 34" TWISTED REBAR, DOWN 0.3' WITH PIECES OF DETERIORATED WOOD STAKE BESIDE IT, DOWN 12"
 left monument as found, lowered monument, removed monument (explain)
- On _____ placed a _____
DATE

SKETCH OF REFERENCE TIES



BEARINGS OBSERVED WITH COMPASS

Statement of evidence relative to this corner location is on back of page.

J. B. M. 10-28-84
6-1181

I hereby certify that this document and the data contained herein was prepared by me or under my direct supervision.

Lowell R. Pommeroy 11-7-85
SIGNATURE DATE

Registration No. 17005
 Land Surveyor, Professional Engineer
 County Surveyor, County Engineer

OFFICE OF THE COUNTY RECORDER

County of _____

I hereby certify that this document was filed in the Co. Recorders office at _____ M. on the _____ day of _____ A.D., 19__

County Recorder _____

By _____, Deputy

DOCUMENT NO. _____

East Quarter Corner Section 26, Township 107 North, Range 39 West

This corner was originally established by the U. S. General Land Office survey in 1861. The government notes show corner marked with a wood post set in mound of earth with pits and trench dug around the mound.

In March 1985, the DNR Bureau of Engineering contacted the following for corner information:

Murray County Offices of the Recorder and Highway Engineer
Cottonwood County Offices of the Recorder and Highway Engineer
Mn/Dot Office in St. Paul
U.S. Dept. of the Interior, Fish and Wildlife Office in Minneapolis
Land Surveying Firms:
Martin Land Surveying of Worthington
Madsen Land Surveyors of Fairmont
Sioux Engineering of Windom

The following information was obtained from the Cottonwood County Recorders Office:

A railroad right-of-way plat, date not indicated, shows this corner 640 feet north of railroad center line station 1861 + 0, and 2619.50 feet from the northeast corner of Section 35. Plat does not show what was found or set at the corner.

The following information was obtained from the Murray County Recorders Office:

Surveyors Record Book, on page 212 contains a survey by J. W. Woolstencraft, County Surveyor, dated October 27, 1909. Survey shows corner 2640 ft. from the northeast and southeast corners of Section 26, but does not state what was found or set at the corner.

Surveyors Record Book, on page 289, contains a survey by J. W. Woolstencraft, County Surveyor, dated April 11, 1924. Survey states corner is a stone with:

a large stone 3 ft. south and 1½ ft. west
2640 ft. from the northeast and southeast corners of Section 26.
2657 ft. from the center of Section 25

The following information was obtained from the Madsen Land Surveyors:

In 1981 John Madsen RLS #13593 found a 3/4" by 24" iron bar with wood stake down 18". Continued digging but found no evidence of the record stone. Reset the found iron bar down 6".

The following information was obtained from the County Highway Engineer's Office:

A page of a new tie book of government corners shows on August 11, 1981 found a stone down 33". Set a RLS iron pin down 6" over stone and took tie:
nail & cap power pole, southeast, 36.90 ft.

In March 1985, the DNR Bureau of Engineering traversed to the area of the corner and found a 5/8" by 34" twisted rebar down 4" with pieces of deteriorated wood stake beside it down 12". Old road bed was encountered down 10". Measured from the rebar:

2637.34 ft. from the northeast corner Section 26
2632.22 ft. from the intersection of roads in area of southeast corner Section 26

Accept the rebar as the location of the corner.
Traverse information is available from the DNR Bureau of Engineering.